



# HydroLuxe LVT Installation Guide

---

Welcome to HydroLuxe LVT, your ultimate choice for elegant and resilient flooring. Our Luxury Vinyl Tiles (LVT) offer a perfect blend of style and functionality, providing an ideal solution for areas that demand durability without compromising on aesthetic appeal. Crafted with attention to detail, HydroLuxe LVT ensures a water-proof surface, making it suitable for various settings, from bustling homes to high-traffic commercial spaces.

As you embark on the installation of your new flooring, this guide is designed to assist you every step of the way. Whether you're a DIY enthusiast or a professional installer, these instructions are straightforward and easy to follow, ensuring a hassle-free and efficient installation process. By adhering to these guidelines, you will maximize the performance and longevity of your HydroLuxe LVT flooring, enjoying its beauty and benefits for years to come.

## Installation Process for HydroLuxe LVT Flooring

### 1. Layout Planning:

The initial step in the installation of HydroLuxe Luxury Vinyl Tiles (LVT) involves meticulous layout planning. This phase is crucial as it sets the foundation for the entire installation process. Begin by assessing the dimensions of the room to determine the most efficient layout, ensuring minimal waste and an optimal aesthetic outcome.

Consider the direction of the tiles carefully. The orientation can dramatically alter the room's appearance - for instance, placing the tiles lengthwise can make a narrow room appear wider. Also, take into account the placement of seams. Ideally, seams should be placed away from high-traffic areas to reduce wear and tear. Plan the layout so that the planks at the edges of the room are of reasonable size, avoiding very narrow plank strips that can be difficult to install and might compromise the visual appeal.

*A useful tip is to dry lay a row of tiles without adhesive to visualize the outcome, making adjustments as necessary.*

### 2. Acclimatization:

Before installation, HydroLuxe LVT needs to undergo a period of acclimatization in the room where it will be installed, or a similar environment. This process should last for at least 24 hours, or until the product reaches room temperature, which should be at least 18°C but not exceed 27°C. During this period, ensure that the planks or tiles are stored in neat stacks, positioned away from direct sources of heat or cooling, and away from windows that receive intense direct sunlight. This precaution is necessary to allow the LVT to adjust gradually to the ambient conditions of the room. Maintain a steady temperature for HydroLuxe LVT installation - no more than 5°C fluctuation per day, above 18°C in the room and 15°C for the subfloor, starting 24 hours before and continuing for 72 hours after installation.

### 3. Subfloor:

To avoid telegraphing in your HydroLuxe LVT dryback installation, it's essential to thoroughly prepare the subfloor. Start by ensuring the subfloor is completely level and smooth. Any cracks, bumps, or dips can cause the LVT to mold to these imperfections, resulting in telegraphing. Use a suitable leveling compound to fill in low spots, and sand down high spots for an even surface. The subfloor should also be clean and free of debris, dust, or old adhesive residues, as these can also contribute to telegraphing.



#### **4. Underfloor Heating:**

HydroLuxe LVT is compatible with traditional water-based underfloor heating systems, in accordance with EN 1264 standards parts 1 to 5. However, it's advised not to use wired electrical heating systems unless they are embedded in at least 9mm of appropriate leveling compound to avoid direct contact. The surface temperature should always be kept below 27°C. If there's any uncertainty, it's recommended to seek additional advice. After installing the flooring, the underfloor heating should be gradually increased at a rate of 5°C per day until reaching the normal operating temperature, ensuring it does not exceed 27°C. Always refer to the heating system manufacturer's guidelines to confirm compatibility.

#### **5. Applying Adhesive:**

The next step involves the application of adhesive. It is imperative to use the adhesive recommended specifically for HydroLuxe LVT to ensure optimal performance and durability. Begin by thoroughly cleaning the subfloor to remove any dust, debris, or residues that might impair the adhesive's effectiveness.

Spread the adhesive uniformly over the subfloor using a trowel. The type of trowel and the method of application should align with the adhesive manufacturer's instructions. Pay close attention to the adhesive's open time - the period during which the adhesive is tacky and effective. This is a critical aspect as it determines the window you have to lay down the tiles correctly.

Apply the adhesive in small sections to prevent it from drying out before the tiles are laid down. Ensure the room is well-ventilated during this process to facilitate proper drying and to reduce the inhalation of fumes.

#### **6. Laying the Planks/Tiles:**

Begin laying the plank/tile either from the centre of the room or a predetermined starting point based on your layout plan. This central starting point helps in achieving a symmetrical and balanced look. Press each plank/tile firmly into place on the adhesive, ensuring there are no air bubbles trapped underneath. It is important to work swiftly but accurately to lay the tiles while the adhesive is still tacky.

Use a rolling pin or a specialized floor roller (Minimum 50kg) to press the plank/tile into the adhesive. This step is crucial for securing a strong bond and ensuring a flat, even surface. Check each tile for level and alignment as you proceed, making adjustments as necessary.

#### **7. Cutting plank/tile:**

Cutting plank/tile to fit around edges, corners, and obstacles is an intricate part of the installation process. Measure the space where a full tile won't fit and transfer these measurements onto the tile. To cut the plank/tile, use a straight edge as a guide and a sharp utility knife. Score the tile along the straight edge and then snap it along the scored line. For more complex cuts, like around pipes or irregular shapes, create a template out of cardboard to ensure accuracy.

*Always wear safety gloves and goggles during this process to protect against sharp edges and tile fragments.*

#### **8. Finishing Touches:**

Once all the tiles are laid, inspect the entire floor for any raised edges or misaligned seams. These issues should be addressed immediately as they can compromise the integrity and appearance of the flooring. If a plank/tile is not properly bonded, lift it carefully and apply additional adhesive. Use a roller to resecure the tile in place. For raised edges or misaligned seams, apply gentle pressure to flatten them, or add a small amount of adhesive if necessary.

*After completing the installation, clean any excess adhesive from the surface of the tiles with a damp cloth. Avoid walking on the floor until the adhesive has fully cured, as per the manufacturer's instructions.*



## Post-Installation Care for HydroLuxe LVT Flooring

### 1. Drying Time:

After the meticulous installation of HydroLuxe Luxury Vinyl Tiles (LVT), the first critical step is to respect the drying time. This phase is essential for the adhesive to cure and for the tiles to settle properly. The duration of this period varies depending on the adhesive used and can range from a few hours to several days. It's imperative to refer to the manufacturer's instructions for the specific drying time recommended for the adhesive.

During this curing period, avoid walking on the floor or placing any furniture or heavy items in the room. This precaution ensures that the plank/tile remain undisturbed and properly bonded to the subfloor. Additionally, maintain a stable room temperature and avoid significant temperature fluctuations, as extreme conditions can affect the drying process.

### 2. Cleaning:

Once the adhesive has fully cured, the next step is cleaning your new HydroLuxe LVT flooring. The beauty of LVT flooring lies not only in its appearance but also in its ease of maintenance. To clean the floor, start by removing loose dirt and debris with a soft-bristle broom or a vacuum cleaner designed for hard flooring.

For more thorough cleaning, use a damp mop with a mild cleaner specifically formulated for LVT flooring. It's crucial to avoid harsh chemicals, as they can damage the surface of the tiles. Similarly, excessive water should be avoided. While HydroLuxe LVT is water-proof, large amounts of water can seep through the seams and potentially damage the subfloor or cause the product to lift. Spot clean spills and stains immediately to prevent them from setting in. For tougher stains, use a soft cloth and a mild cleaning solution. Do not use abrasive scrubbers or steel wool as these can scratch and dull the surface of the tiles.

### 3. Maintenance:

Regular maintenance is key to preserving the longevity and appearance of your HydroLuxe LVT flooring. Routine cleaning, such as sweeping or vacuuming, prevents the accumulation of grit and dirt that can scratch the floor's surface. When moving furniture, lift rather than drag it to avoid scratching the tiles. Consider using felt pads under furniture legs to further protect the floor.

In high-traffic areas, consider using rugs or mats to reduce wear. However, ensure that the rugs are nonstaining and have a non-rubber backing, as rubber can sometimes react with the vinyl and cause discoloration. It's also advisable to keep the room's exposure to direct sunlight to a minimum, as prolonged exposure to UV rays can cause fading. Use curtains or blinds to protect your flooring from excessive sun exposure.

Periodically, it might be necessary to carry out a more intensive clean. For this, use a cleaner designed for deep cleaning LVT floors, following the product instructions carefully. Ensure the room is wellventilated during this process.

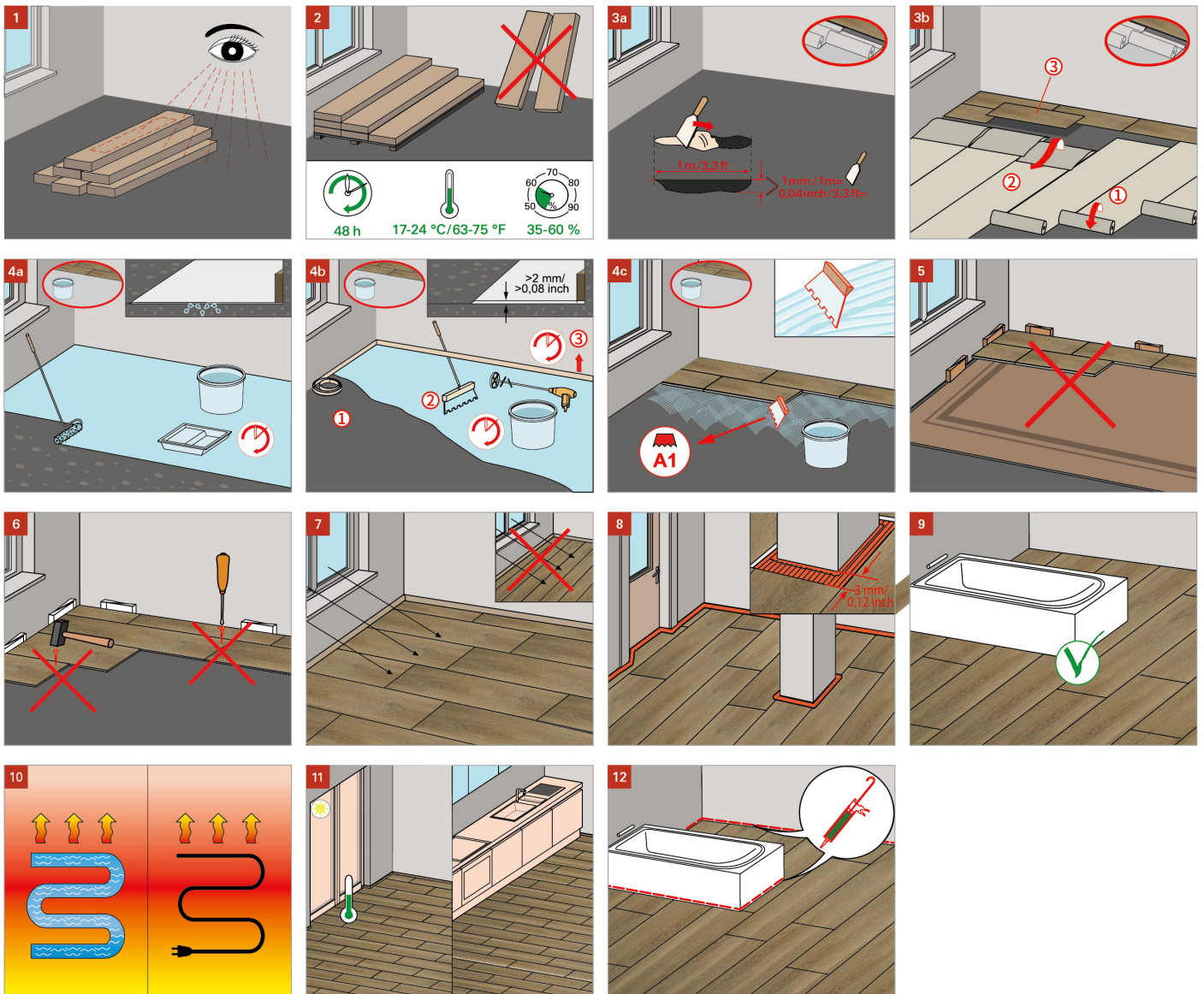
### 4. Long-Term Care:

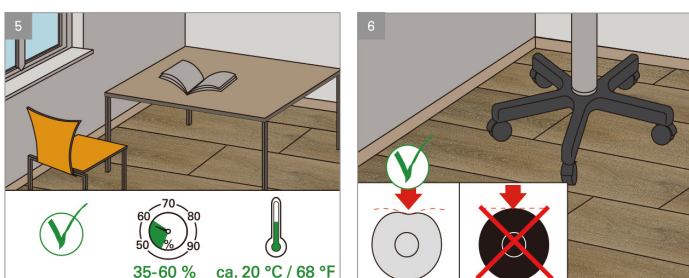
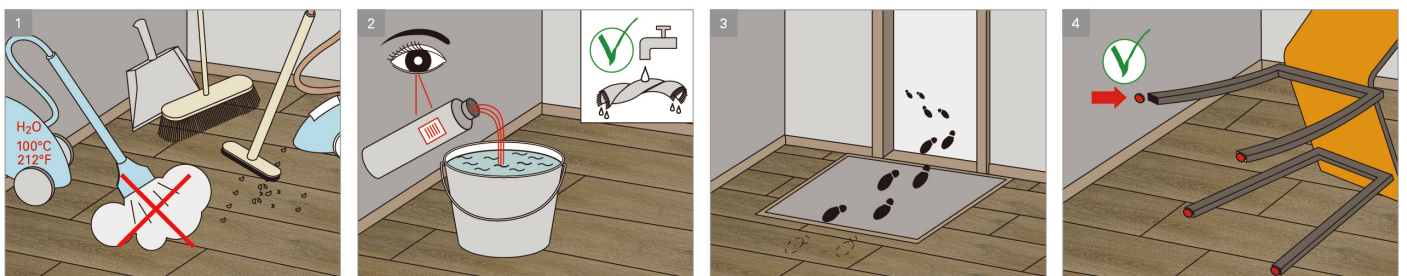
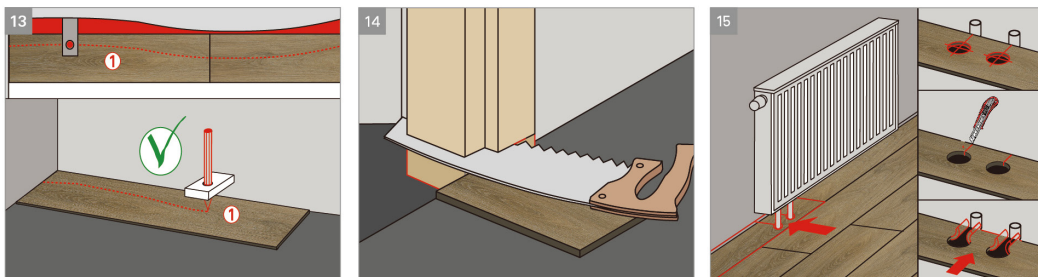
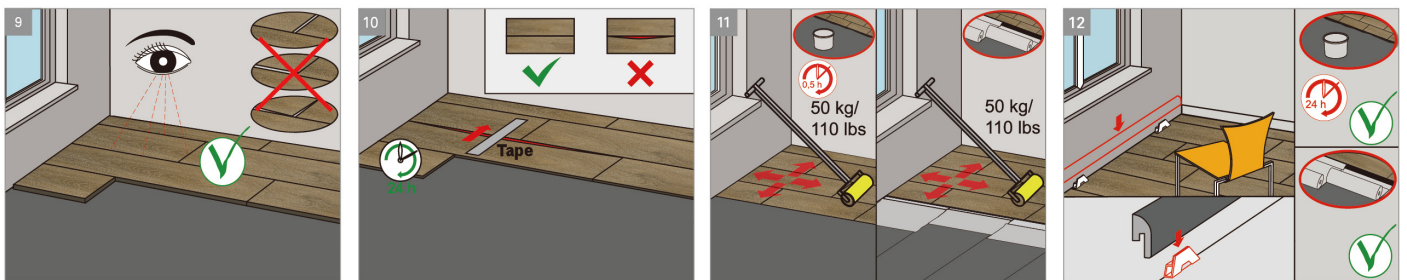
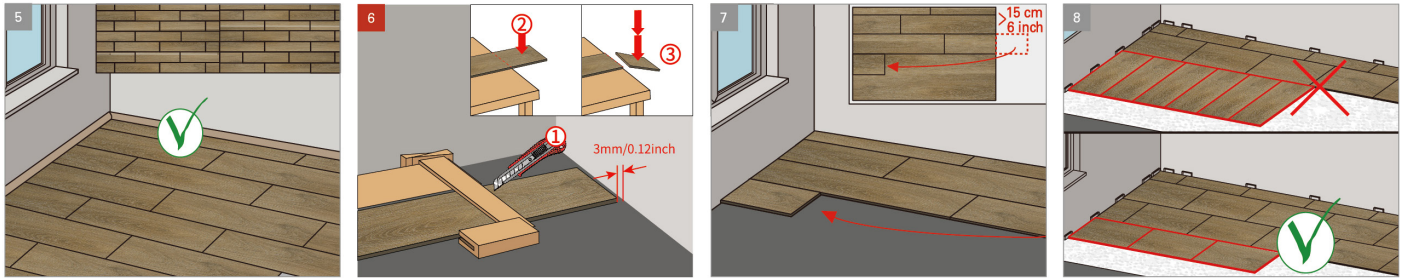
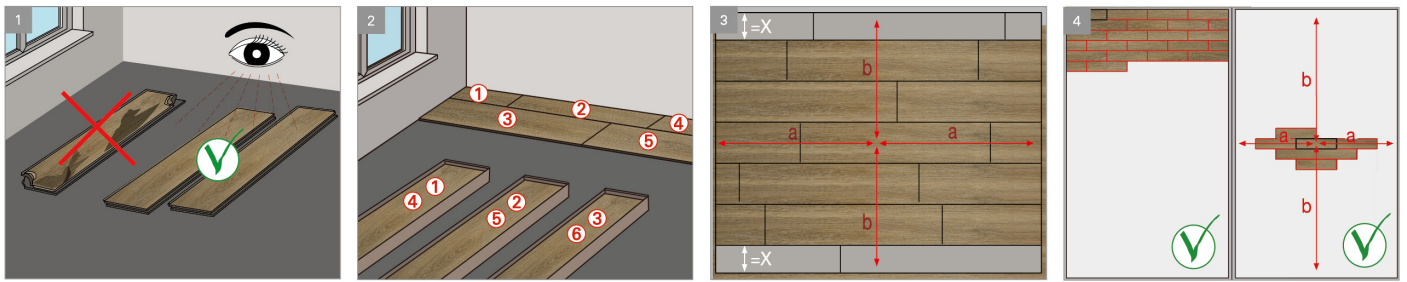
While LVT flooring is known for its durability, it's still crucial to adhere to best practices for long-term care. Avoid using wax-based cleaners or polish on the floor, as they can leave a residue and dull the surface. If scratches or damage occur, consult with a flooring professional for repair options. In some cases, individual tiles can be replaced without having to redo the entire floor.



### Customer Support:

For any questions, concerns, or assistance during your HydroLuxe LVT installation, our dedicated customer support team is here to help. Whether you need advice on the installation process, have queries about the product, or require troubleshooting assistance, please don't hesitate to reach out. Contact us at Flanagan Flooring Distributors where our knowledgeable and friendly staff are available to provide you with the support and guidance you need for a successful and safe installation. We are committed to ensuring that your experience with HydroLuxe LVT is not only satisfying but also safe and seamless.





**HYDROLUXE**  
STRONG AND STYLISH LVT